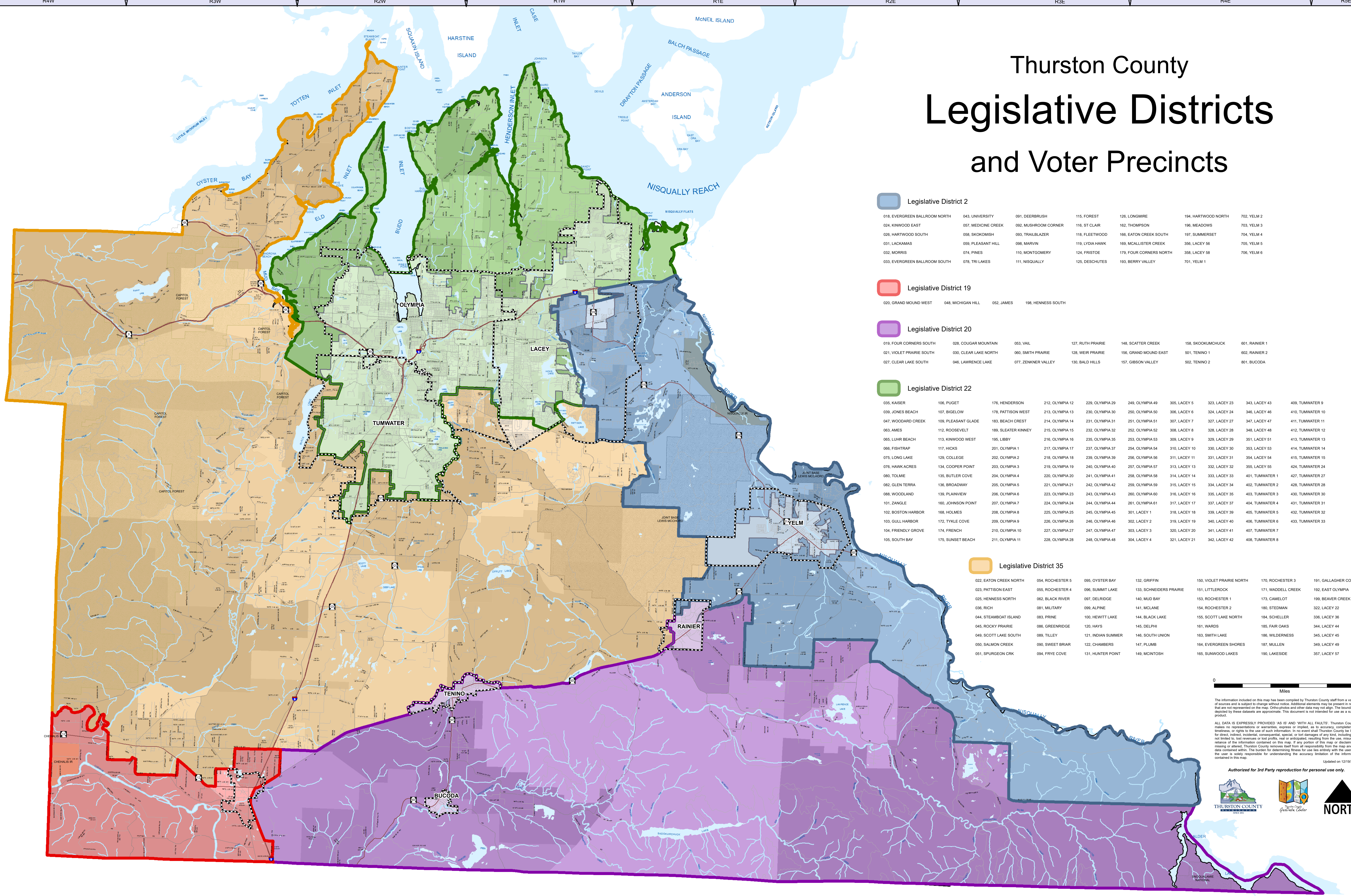
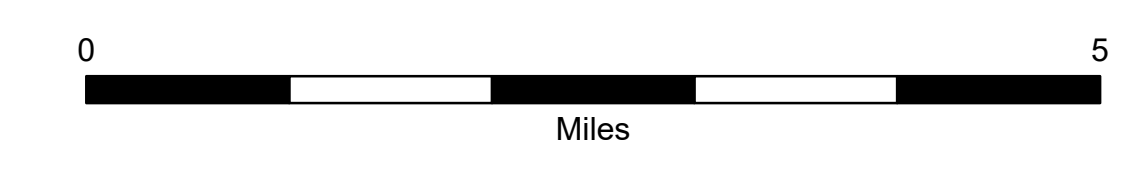


Thurston County Legislative Districts and Voter Precincts



Legislative District 2										
018, EVERGREEN BALLROOM NORTH	043, UNIVERSITY	091, DEERBRUSH	115, FOREST	126, LONGMIRE	194, HARTWOOD NORTH	702, YELM 2				
024, KINWOOD EAST	057, MEDICINE CREEK	092, MUSHROOM CORNER	116, ST CLAIR	162, THOMPSON	196, MEADOWS	703, YELM 3				
026, HARTWOOD SOUTH	058, SKOKOMISH	093, TRAILBLAZER	118, FLEETWOOD	166, EATON CREEK SOUTH	197, SUMMERSET	704, YELM 4				
031, LACKAMAS	059, PLEASANT HILL	098, MARVIN	119, LYDIA HAWK	169, MCALLISTER CREEK	356, LACEY 56	705, YELM 5				
032, MORRIS	074, PINES	110, MONTGOMERY	124, FRISTOE	179, FOUR CORNERS NORTH	358, LACEY 58	706, YELM 6				
033, EVERGREEN BALLROOM SOUTH	078, TRI LAKES	111, NISQUALLY	125, DESCHUTES	193, BERRY VALLEY	701, YELM 1					
Legislative District 19										
020, GRAND MOUND WEST	048, MICHIGAN HILL	052, JAMES	198, HENNESS SOUTH							
Legislative District 20										
019, FOUR CORNERS SOUTH	028, COUGAR MOUNTAIN	053, VAIL	127, RUTH PRAIRIE	148, SCATTER CREEK	158, SKOOKUMCHUCK	801, RAINIER 1				
021, VIOLET PRAIRIE SOUTH	030, CLEAR LAKE NORTH	060, SMITH PRAIRIE	128, WEIR PRAIRIE	156, GRAND MOUND EAST	501, TENINO 1	802, RAINIER 2				
027, CLEAR LAKE SOUTH	046, LAWRENCE LAKE	077, ZENKNER VALLEY	130, BALD HILLS	157, GIBSON VALLEY	502, TENINO 2	801, BUCODA				
Legislative District 22										
035, KAISER	106, PUGET	176, HENDERSON	212, OLYMPIA 12	229, OLYMPIA 29	249, OLYMPIA 49	305, LACEY 5	323, LACEY 23	343, LACEY 43	409, TUMWATER 9	
039, JONES BEACH	107, BIGELOW	178, HENDERSON	213, OLYMPIA 13	230, OLYMPIA 30	250, OLYMPIA 50	306, LACEY 6	324, LACEY 24	346, LACEY 46	410, TUMWATER 10	
047, WOODARD CREEK	109, PLEASANT GLADE	183, BEACH CREST	214, OLYMPIA 14	231, OLYMPIA 31	251, OLYMPIA 51	307, LACEY 7	327, LACEY 27	347, LACEY 47	411, TUMWATER 11	
063, AMES	112, ROOSEVELT	189, SLEATER KINNEY	215, OLYMPIA 15	232, OLYMPIA 32	252, OLYMPIA 52	308, LACEY 8	328, LACEY 28	348, LACEY 48	412, TUMWATER 12	
065, LUHR BEACH	113, KINWOOD WEST	195, LIBBY	216, OLYMPIA 16	233, OLYMPIA 33	253, OLYMPIA 53	309, LACEY 9	329, LACEY 29	351, LACEY 51	413, TUMWATER 13	
066, FISHTRAP	117, HICKS	201, OLYMPIA 1	217, OLYMPIA 17	237, OLYMPIA 37	254, OLYMPIA 54	310, LACEY 10	330, LACEY 30	353, LACEY 53	414, TUMWATER 14	
075, LONG LAKE	129, COLLEGE	202, OLYMPIA 2	218, OLYMPIA 18	239, OLYMPIA 39	256, OLYMPIA 56	311, LACEY 11	331, LACEY 31	354, LACEY 54	415, TUMWATER 15	
076, HAWK ACRES	134, COOPER POINT	203, OLYMPIA 3	219, OLYMPIA 19	240, OLYMPIA 40	257, OLYMPIA 57	313, LACEY 13	332, LACEY 32	355, LACEY 55	424, TUMWATER 24	
080, TOLMIE	135, BUTLER COVE	204, OLYMPIA 4	220, OLYMPIA 20	241, OLYMPIA 41	258, OLYMPIA 58	314, LACEY 14	333, LACEY 33	401, TUMWATER 1	427, TUMWATER 27	
082, GLEN TERRA	136, BROADWAY	205, OLYMPIA 5	221, OLYMPIA 21	242, OLYMPIA 42	259, OLYMPIA 59	315, LACEY 15	334, LACEY 34	402, TUMWATER 2	428, TUMWATER 28	
088, WOODLAND	139, PLAINVIEW	206, OLYMPIA 6	223, OLYMPIA 23	243, OLYMPIA 43	260, OLYMPIA 60	316, LACEY 16	335, LACEY 35	403, TUMWATER 3	430, TUMWATER 30	
101, ZANGLE	160, JOHNSON POINT	207, OLYMPIA 7	224, OLYMPIA 24	244, OLYMPIA 44	261, OLYMPIA 61	317, LACEY 17	337, LACEY 37	404, TUMWATER 4	431, TUMWATER 31	
102, BOSTON HARBOR	168, HOLMES	208, OLYMPIA 8	225, OLYMPIA 25	245, OLYMPIA 45	262, OLYMPIA 62	318, LACEY 18	339, LACEY 39	405, TUMWATER 5	432, TUMWATER 32	
103, GULL HARBOR	172, TYKLE COVE	209, OLYMPIA 9	226, OLYMPIA 26	246, OLYMPIA 46	263, OLYMPIA 63	319, LACEY 19	340, LACEY 40	406, TUMWATER 6	433, TUMWATER 33	
104, FRIENDLY GROVE	174, FRENCH	210, OLYMPIA 10	227, OLYMPIA 27	247, OLYMPIA 47	264, OLYMPIA 64	320, LACEY 20	341, LACEY 41	407, TUMWATER 7		
105, SOUTH BAY	175, SUNSET BEACH	211, OLYMPIA 11	228, OLYMPIA 28	248, OLYMPIA 48	265, OLYMPIA 65	321, LACEY 21	342, LACEY 42	408, TUMWATER 8		
Legislative District 35										
022, EATON CREEK NORTH	054, ROCHESTER 5	095, OYSTER BAY	132, GRIFFIN	150, VIOLET PRAIRIE NORTH	170, ROCHESTER 3	191, GALLAGHER COVE				
023, PATTON EAST	055, ROCHESTER 4	096, SUMMIT LAKE	133, SCHNEIDERS PRAIRIE	171, LITTLEROCK	192, EAST OLYMPIA					
025, HENNESS NORTH	062, BLACK RIVER	097, DELRIDGE	140, MUD BAY	153, ROCHESTER 1	173, CAMELOT	199, BEAVER CREEK				
036, RICH	081, MILITARY	099, ALPINE	141, MCLANE	154, ROCHESTER 2	180, STEDMAN	322, LACEY 22				
044, STEAMBOAT ISLAND	083, PRINE	100, HEWITT LAKE	144, BLACK LAKE	155, SCOTT LAKE NORTH	184, SCHELLER	336, LACEY 36				
045, ROCKY PRAIRIE	086, GREENRIDGE	120, HAYS	145, DELPHI	161, WARDS	185, FAIR OAKS	344, LACEY 44				
049, SCOTT LAKE SOUTH	089, TILLEY	121, INDIAN SUMMER	146, SOUTH UNION	163, SMITH LAKE	186, WILDERNESS	345, LACEY 45				
050, SALMON CREEK	090, SWEET BRIAR	122, CHAMBERS	147, PLUMB	164, EVERGREEN SHORES	187, MULLEN	349, LACEY 49				
051, SPURGEON CRK	094, FRYE COVE	131, HUNTER POINT	149, MCINTOSH	165, SUNWOOD LAKES	190, LAKESIDE	357, LACEY 57				



The information included on this map has been compiled by Thurston County staff from a variety of sources and is subject to change without notice. Additional elements may be present in reality that are not represented on the map. Ortho-photos and other data may not align. The boundaries depicted by these datasets are approximate. This document is not intended for use as a survey product.

ALL DATA IS EXPRESSLY PROVIDED "AS IS" AND "WITH ALL FAULTS". Thurston County makes no representations or warranties, express or implied, as to accuracy, completeness, timeliness, or rights to the use of such information. In no event shall Thurston County be liable for direct, indirect, incidental, consequential, special, or tort damages of any kind, including, but not limited to, lost revenues or lost profits, real or anticipated, resulting from the use, misuse or reliance of the information contained on this map. If any portion of this map or disclaimer is missing or altered, Thurston County removes itself from all responsibility from the map and the data contained within. The burden for determining fitness for use lies entirely with the user and the user is solely responsible for understanding the accuracy limitation of the information contained in this map.

Updated on 12/19/2023

Authorized for 3rd Party reproduction for personal use only.

