

Thurston County Growth Management Impact Transportation Fee Areas

- Transportation Impact Fee Areas**
- North TSA Impact Fee Area
 - Northwest TSA Impact Fee Area
 - East TSA Impact Fee Area
 - South TSA Impact Fee Area
 - West TSA Impact Fee Area
 - Central TSA Impact Fee Area
 - Incorporated and Other (Non-Fee Area)

*****Summary of Impact Fees*****

The information below is a summary. Impact fees are assessed and collected according to the Thurston County Impact Fee Ordinance (Title 25) and the most current Impact Fee Schedule. Please check with Thurston County Resource Stewardship and/or Public Works staff for the most current fees.

Impact Fees are used to fund new developments share of improvements to Parks, Transportation and Schools, that are necessary due to the increase in residences, students and traffic related to new development.

Impact fees will be assessed at the time a completed building application is submitted to the Thurston County Permit Assistance Center.

Impact Fees will be collected at the time the Building Permit is drawn.

Impact fees for transportation and schools are not uniform across the county, rather the fee amount is based on the projected cost of a capital projects within a school district or transportation district service area.

Park's impact fees are uniform across the county.

Development applicants may calculate the potential impact fee amounts by identifying the location of their project, and then summing the transportation, school and parks fee impact per development unit.

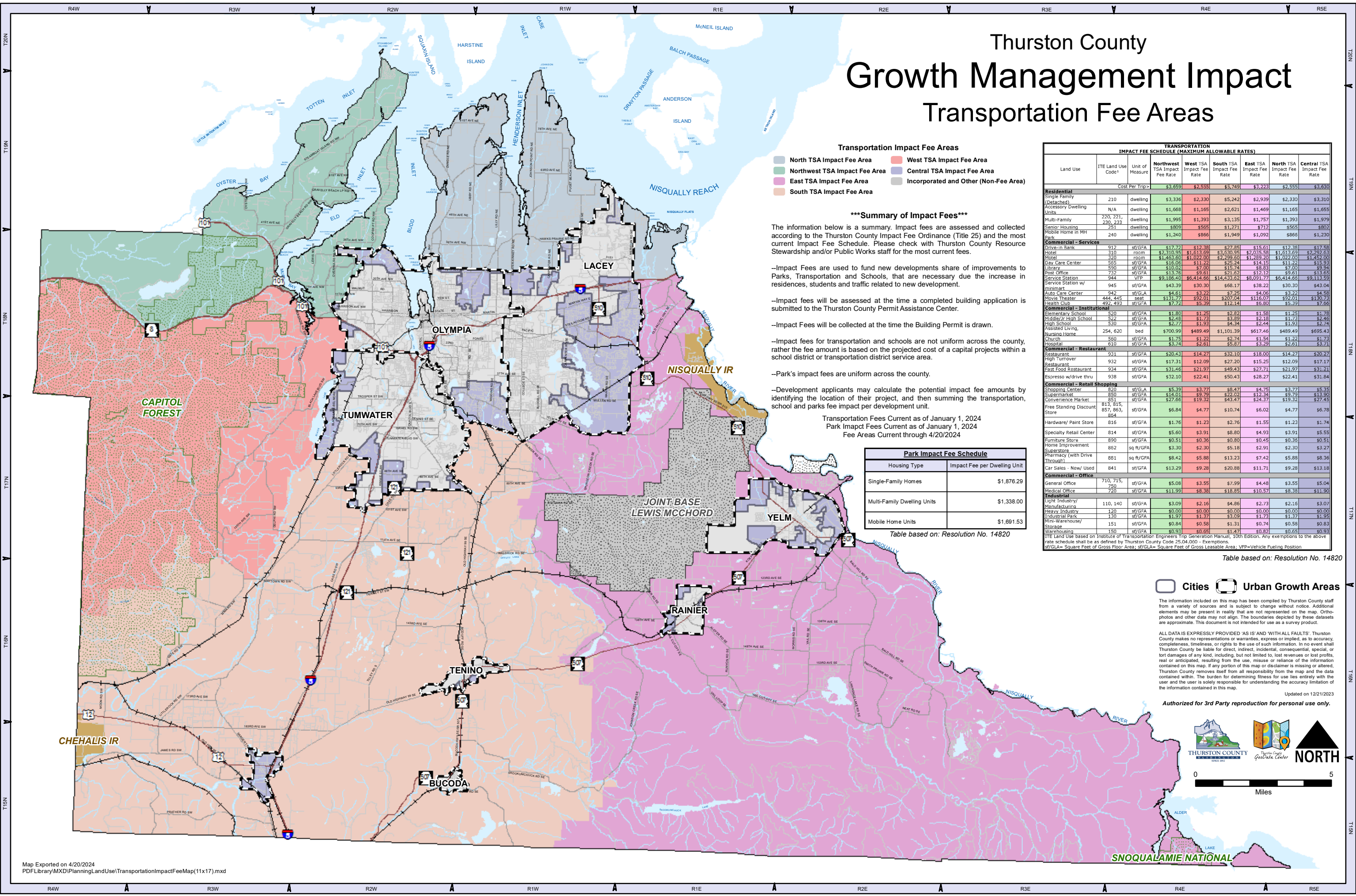
Transportation Fees Current as of January 1, 2024
Park Impact Fees Current as of January 1, 2024
Fee Areas Current through 4/20/2024

Housing Type	Impact Fee per Dwelling Unit
Single-Family Homes	\$1,876.29
Multi-Family Dwelling Units	\$1,338.00
Mobile Home Units	\$1,691.53

Table based on: Resolution No. 14820

Land Use	ITE Land Use Code ¹	Unit of Measure	IMPACT FEE RATE					
			Northwest TSA Impact Fee Rate	West TSA Impact Fee Rate	South TSA Impact Fee Rate	East TSA Impact Fee Rate	North TSA Impact Fee Rate	Central TSA Impact Fee Rate
Cost Per Trip >			\$3,659	\$2,555	\$5,749	\$3,223	\$2,555	\$3,630
Residential								
Single Family (Detached)	210	dwelling	\$3,336	\$2,330	\$5,242	\$2,939	\$2,330	\$3,310
Accessory Dwelling Units	N/A	dwelling	\$1,668	\$1,165	\$2,621	\$1,469	\$1,165	\$1,655
Multi-Family	220, 221, 230, 233	dwelling	\$1,995	\$1,393	\$3,135	\$1,757	\$1,393	\$1,979
Senior Housing	251	dwelling	\$809	\$565	\$1,271	\$712	\$565	\$802
Mobile Home in MH Park	240	dwelling	\$1,240	\$866	\$1,949	\$1,092	\$866	\$1,230
Commercial - Services								
Day Care	912	sf/GFA	\$17.72	\$12.38	\$27.85	\$15.61	\$12.38	\$17.58
Hotel	310	room	\$2,310.95	\$1,613.69	\$3,630.95	\$2,035.58	\$1,613.69	\$2,292.63
Motel	320	room	\$1,463.60	\$1,022.00	\$2,299.60	\$1,289.20	\$1,022.00	\$1,452.00
Day Care Center	905	sf/GFA	\$16.94	\$11.70	\$25.94	\$14.15	\$11.70	\$16.93
Library	590	sf/GFA	\$10.02	\$7.00	\$15.74	\$8.83	\$7.00	\$9.94
Post Office	732	sf/GFA	\$13.76	\$9.61	\$21.62	\$12.12	\$9.61	\$13.65
Service Station	944	VFP	\$9,136.40	\$6,414.56	\$14,433.62	\$8,091.77	\$6,414.56	\$9,133.59
Service Station w/ minimart	945	sf/GFA	\$43.39	\$30.30	\$68.17	\$38.22	\$30.30	\$43.04
Auto Care Center	942	sf/GFA	\$4.61	\$3.32	\$7.75	\$4.06	\$3.32	\$4.58
Movie Theater	444, 445	seat	\$11.77	\$9.01	\$20.74	\$11.07	\$9.01	\$13.73
Health Club	493, 493	sf/GFA	\$7.72	\$5.39	\$12.14	\$6.80	\$5.39	\$7.66
Commercial - Institutional								
Elementary School	520	sf/GFA	\$1.80	\$1.25	\$2.82	\$1.58	\$1.25	\$1.78
Middle/Jr High School	522	sf/GFA	\$2.48	\$1.73	\$3.89	\$2.18	\$1.73	\$2.46
High School	520	sf/GFA	\$2.77	\$1.93	\$4.34	\$2.44	\$1.93	\$2.74
Assisted Living	254, 620	bed	\$700.99	\$489.49	\$1,101.39	\$617.46	\$489.49	\$695.43
Nursing Home	550	sf/GFA	\$1.75	\$1.22	\$2.74	\$1.54	\$1.22	\$1.73
Church	610	sf/GFA	\$3.74	\$2.61	\$5.57	\$3.29	\$2.61	\$3.71
Commercial - Restaurant								
Restaurant	931	sf/GFA	\$20.43	\$14.27	\$32.10	\$18.00	\$14.27	\$20.27
High Turnover Restaurant	932	sf/GFA	\$17.31	\$12.09	\$27.20	\$15.25	\$12.09	\$17.17
Fast Food Restaurant	934	sf/GFA	\$31.46	\$21.97	\$49.43	\$27.71	\$21.97	\$31.21
Espresso w/drive thru	938	sf/GFA	\$32.10	\$22.41	\$50.43	\$28.27	\$22.41	\$31.84
Commercial - Retail Shopping								
Shopping Center	820	sf/GFA	\$5.39	\$3.77	\$8.47	\$4.75	\$3.77	\$5.35
Supermarket	830	sf/GFA	\$14.01	\$9.79	\$22.02	\$12.34	\$9.79	\$13.90
Convenience Market	851	sf/GFA	\$27.66	\$19.32	\$43.47	\$24.37	\$19.32	\$27.45
Free Standing Discount Store	813, 815, 857, 863, 864	sf/GFA	\$6.84	\$4.77	\$10.74	\$6.02	\$4.77	\$6.78
Hardware/ Paint Store	816	sf/GFA	\$1.76	\$1.23	\$2.76	\$1.55	\$1.23	\$1.74
Specialty Retail Center	814	sf/GFA	\$5.60	\$3.91	\$8.80	\$4.93	\$3.91	\$5.55
Furniture Store	890	sf/GFA	\$0.51	\$0.36	\$0.80	\$0.45	\$0.36	\$0.51
Home Improvement Superstore	862	sq ft/GFA	\$3.30	\$2.30	\$5.18	\$2.91	\$2.30	\$3.27
Pharmacy (with Drive Thru)	881	sq ft/GFA	\$8.42	\$5.88	\$13.23	\$7.42	\$5.88	\$8.36
Car Sales - New/ Used	841	sf/GFA	\$13.29	\$9.28	\$20.88	\$11.71	\$9.28	\$13.18
Commercial - Office								
General Office	710, 715, 720	sf/GFA	\$5.08	\$3.55	\$7.99	\$4.48	\$3.55	\$5.04
Medical Office	720	sf/GFA	\$11.99	\$8.38	\$18.85	\$10.57	\$8.38	\$11.90
Industrial								
Light Industry/ Manufacturing	110, 140	sf/GFA	\$3.09	\$2.16	\$4.86	\$2.73	\$2.16	\$3.07
Heavy Industry	120	sf/GFA	\$0.00	\$0.00	\$0.00	\$0.00	\$0.00	\$0.00
Industrial Park	130	sf/GFA	\$1.97	\$1.37	\$3.09	\$1.73	\$1.37	\$1.95
Mini-Warehouse/ Storage	151	sf/GFA	\$0.84	\$0.58	\$1.31	\$0.74	\$0.58	\$0.83
Warehousing	150	sf/GFA	\$0.93	\$0.65	\$1.47	\$0.82	\$0.65	\$0.93

Table based on: Resolution No. 14820



Cities Urban Growth Areas

The information included on this map has been compiled by Thurston County staff from a variety of sources and is subject to change without notice. Additional elements may be present in reality that are not represented on the map. Orthophotos and other data may not align. The boundaries depicted by these datasets are approximate. This document is not intended for use as a survey product.

ALL DATA IS EXPRESSLY PROVIDED 'AS IS' AND 'WITH ALL FAULTS'. Thurston County makes no representations or warranties, express or implied, as to accuracy, completeness, timeliness, or rights to the use of such information. In no event shall Thurston County be liable for direct, indirect, incidental, consequential, special, or tort damages of any kind, including, but not limited to, lost revenues or lost profits, real or anticipated, resulting from the use, misuse or reliance of the information contained on this map. If any portion of this map or disclaimer is missing or altered, Thurston County removes itself from all responsibility from the map and the data contained within. The burden for determining fitness for use lies entirely with the user and the user is solely responsible for understanding the accuracy limitation of the information contained in this map.

Updated on 12/21/2023
Authorized for 3rd Party reproduction for personal use only.

