

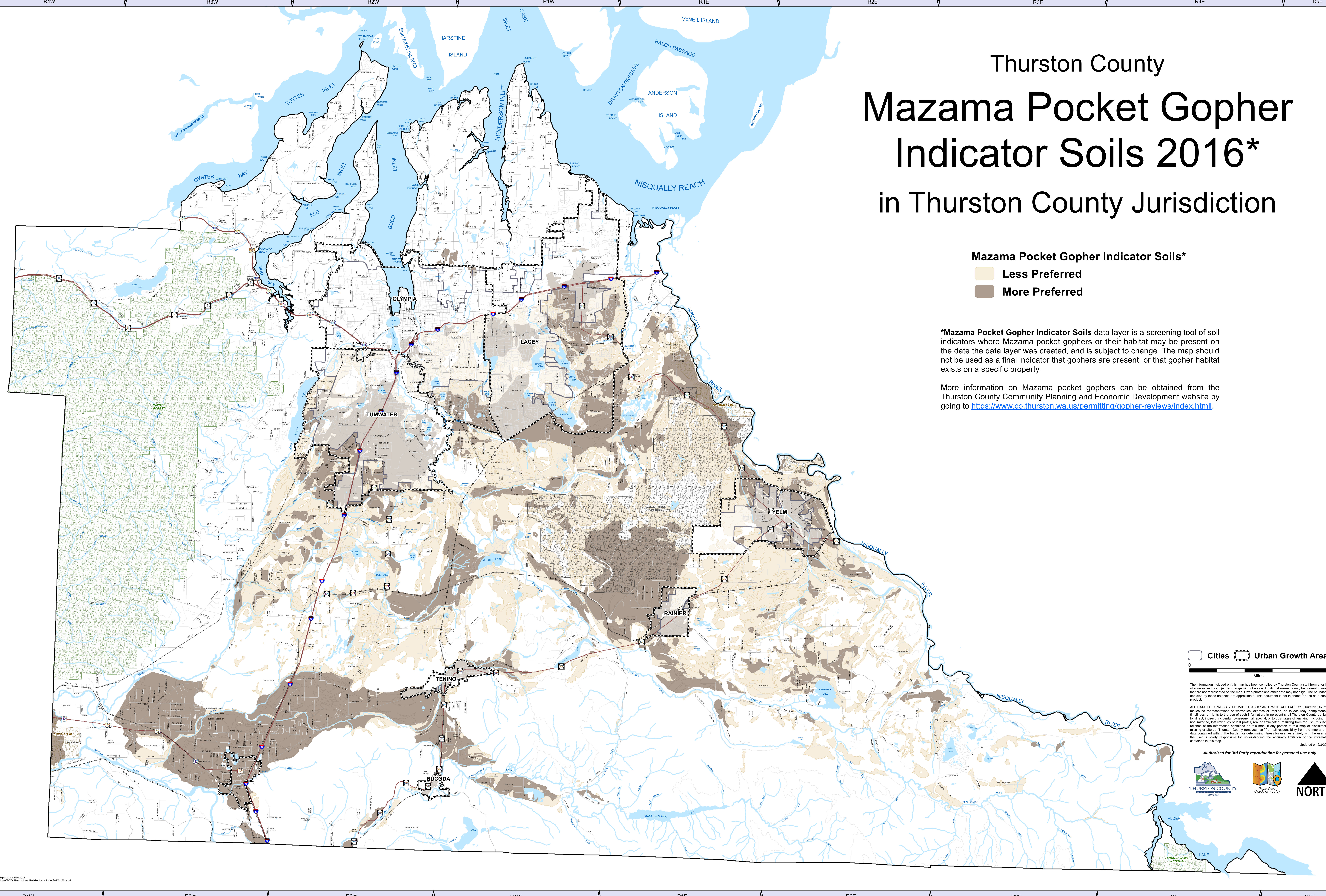
# Thurston County Mazama Pocket Gopher Indicator Soils 2016\* in Thurston County Jurisdiction

**Mazama Pocket Gopher Indicator Soils\***

- Less Preferred
- More Preferred

\*Mazama Pocket Gopher Indicator Soils data layer is a screening tool of soil indicators where Mazama pocket gophers or their habitat may be present on the date the data layer was created, and is subject to change. The map should not be used as a final indicator that gophers are present, or that gopher habitat exists on a specific property.

More information on Mazama pocket gophers can be obtained from the Thurston County Community Planning and Economic Development website by going to <https://www.co.thurston.wa.us/permitting/gopher-reviews/index.html>.



Cities  Urban Growth Areas

0 5  
Miles

The information included on this map has been compiled by Thurston County staff from a variety of sources and is subject to change without notice. Additional elements may be present in reality that are not represented on the map. Ortho-photos and other data may not align. The boundaries depicted by these datasets are approximate. This document is not intended for use as a survey product.

ALL DATA IS EXPRESSLY PROVIDED AS IS AND WITH ALL FAULTS. Thurston County makes no representations or warranties, express or implied, as to accuracy, completeness, timeliness, or rights to the use of such information. In no event shall Thurston County be liable for direct, indirect, incidental, consequential, special, or tort damages of any kind, including, but not limited to, lost revenues or lost profits, real or anticipated, resulting from the use, misuse or reliance of the information contained on this map. If any portion of this map or disclaimer is missing or altered, Thurston County removes itself from all responsibility from the map and the data contained within. The burden for determining fitness for use lies entirely with the user and the user is solely responsible for understanding the accuracy limitation of the information contained in this map.

Updated on 2/19/2022

Authorized for 3rd Party reproduction for personal use only.

