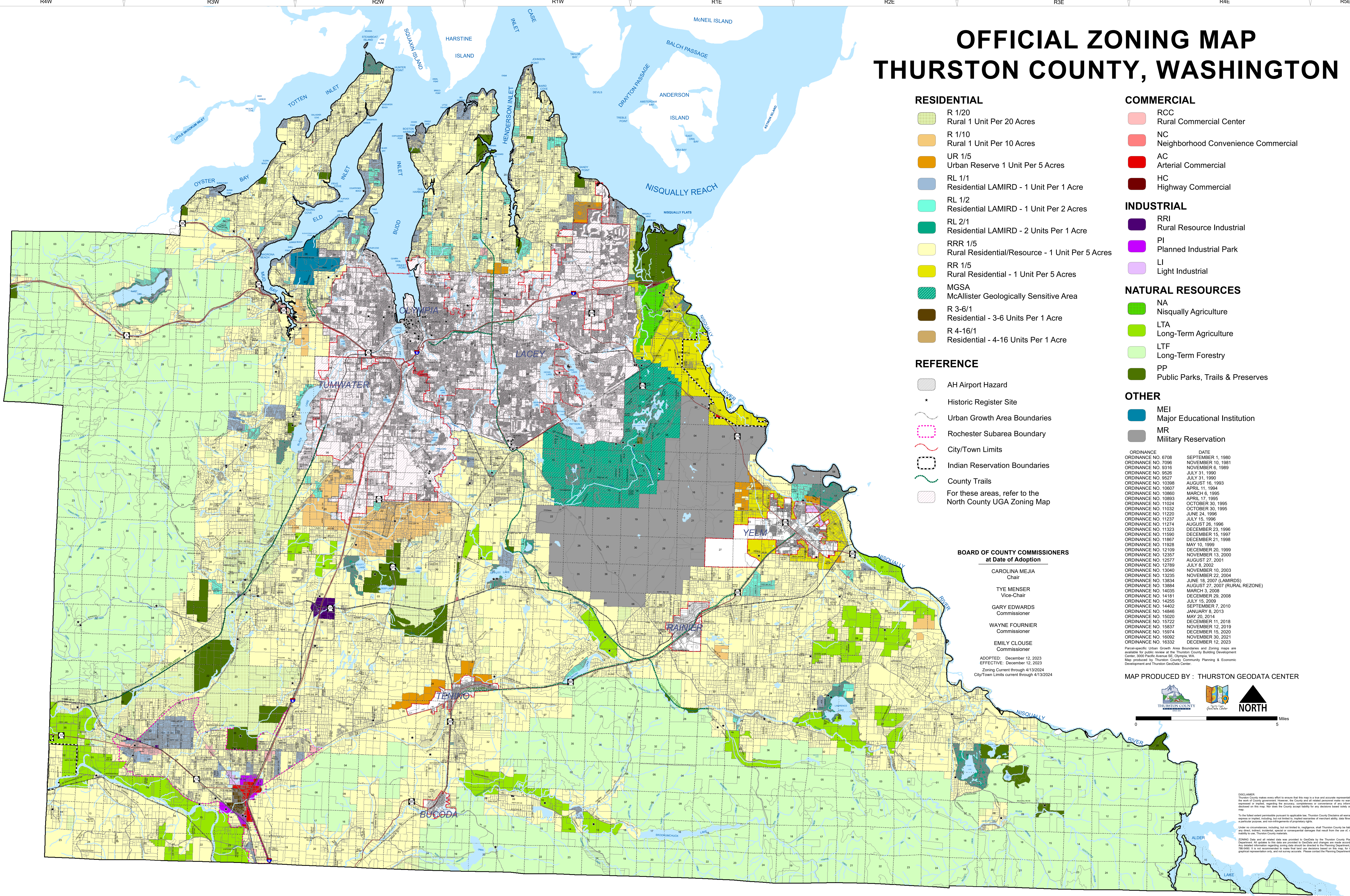


# OFFICIAL ZONING MAP THURSTON COUNTY, WASHINGTON



## RESIDENTIAL

- R 1/20  
Rural 1 Unit Per 20 Acres
- R 1/10  
Rural 1 Unit Per 10 Acres
- UR 1/5  
Urban Reserve 1 Unit Per 5 Acres
- RL 1/1  
Residential LAMIRD - 1 Unit Per 1 Acre
- RL 1/2  
Residential LAMIRD - 1 Unit Per 2 Acres
- RL 2/1  
Residential LAMIRD - 2 Units Per 1 Acre
- RRR 1/5  
Rural Residential/Resource - 1 Unit Per 5 Acres
- RR 1/5  
Rural Residential - 1 Unit Per 5 Acres
- MGSA  
McAllister Geologically Sensitive Area
- R 3-6/1  
Residential - 3-6 Units Per 1 Acre
- R 4-16/1  
Residential - 4-16 Units Per 1 Acre

## REFERENCE

- AH Airport Hazard
- Historic Register Site
- Urban Growth Area Boundaries
- Rochester Subarea Boundary
- City/Town Limits
- Indian Reservation Boundaries
- County Trails
- For these areas, refer to the North County UGA Zoning Map

## COMMERCIAL

- RCC  
Rural Commercial Center
- NC  
Neighborhood Convenience Commercial
- AC  
Arterial Commercial
- HC  
Highway Commercial

## INDUSTRIAL

- RRI  
Rural Resource Industrial
- PI  
Planned Industrial Park
- LI  
Light Industrial

## NATURAL RESOURCES

- NA  
Nisqually Agriculture
- LTA  
Long-Term Agriculture
- LTF  
Long-Term Forestry
- PP  
Public Parks, Trails & Preserves

## OTHER

- MEI  
Major Educational Institution
- MR  
Military Reservation

## BOARD OF COUNTY COMMISSIONERS at Date of Adoption

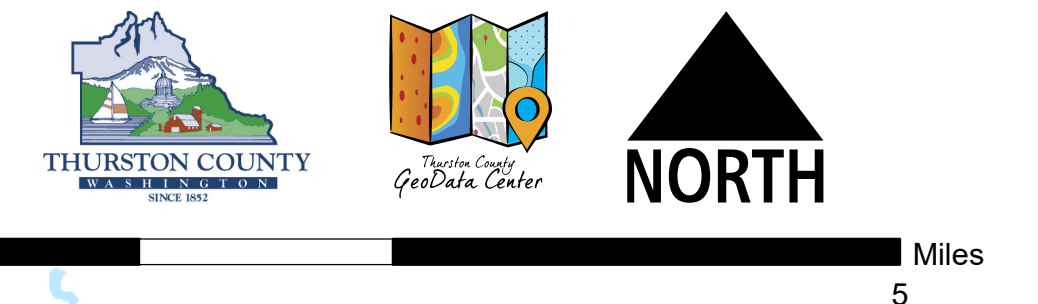
- CAROLINA MEJIA  
Chair
- TYE MENSER  
Vice-Chair
- GARY EDWARDS  
Commissioner
- WAYNE FOURNIER  
Commissioner
- EMILY CLOUSE  
Commissioner

ADOPTED: December 12, 2023  
EFFECTIVE: December 12, 2023  
Zoning Current through 4/13/2024  
City/Town Limits current through 4/13/2024

ORDINANCE NO.	DATE
ORDINANCE NO. 6708	SEPTEMBER 1, 1980
ORDINANCE NO. 7096	NOVEMBER 10, 1981
ORDINANCE NO. 8316	NOVEMBER 6, 1989
ORDINANCE NO. 9506	JULY 31, 1990
ORDINANCE NO. 9527	JULY 31, 1990
ORDINANCE NO. 10398	AUGUST 16, 1993
ORDINANCE NO. 10677	APRIL 11, 1994
ORDINANCE NO. 10860	MARCH 6, 1995
ORDINANCE NO. 10883	APRIL 17, 1995
ORDINANCE NO. 11024	OCTOBER 30, 1995
ORDINANCE NO. 11032	OCTOBER 30, 1995
ORDINANCE NO. 11220	JUNE 24, 1996
ORDINANCE NO. 11237	JULY 15, 1996
ORDINANCE NO. 11274	AUGUST 26, 1996
ORDINANCE NO. 11323	DECEMBER 23, 1996
ORDINANCE NO. 11590	DECEMBER 15, 1997
ORDINANCE NO. 11987	DECEMBER 21, 1998
ORDINANCE NO. 11928	MAY 10, 1999
ORDINANCE NO. 12109	DECEMBER 20, 1999
ORDINANCE NO. 12257	NOVEMBER 13, 2000
ORDINANCE NO. 12577	AUGUST 27, 2001
ORDINANCE NO. 12789	JULY 8, 2002
ORDINANCE NO. 13040	NOVEMBER 10, 2003
ORDINANCE NO. 13235	NOVEMBER 22, 2004
ORDINANCE NO. 13834	JUNE 18, 2007 (LAMIRDS)
ORDINANCE NO. 13864	AUGUST 27, 2007 (RURAL REZONE)
ORDINANCE NO. 14035	MARCH 3, 2008
ORDINANCE NO. 14181	DECEMBER 29, 2008
ORDINANCE NO. 14255	JULY 15, 2009
ORDINANCE NO. 14402	SEPTEMBER 7, 2010
ORDINANCE NO. 14846	JANUARY 8, 2013
ORDINANCE NO. 15020	MAY 20, 2014
ORDINANCE NO. 15722	DECEMBER 11, 2018
ORDINANCE NO. 15837	NOVEMBER 12, 2019
ORDINANCE NO. 15974	DECEMBER 15, 2020
ORDINANCE NO. 16092	NOVEMBER 30, 2021
ORDINANCE NO. 16332	DECEMBER 12, 2023

Parcel-specific Urban Growth Area Boundaries and Zoning maps are available for public review at the Thurston County Building Development Center, 3000 Pacific Avenue SE, Olympia, WA.  
Map produced by Thurston County Community Planning & Economic Development and Thurston GeoData Center.

MAP PRODUCED BY : THURSTON GEODATA CENTER



**DISCLAIMER:**  
Thurston County makes every effort to ensure that this map is a true and accurate representation of the view of County government. However, the County and all related personnel do not warrant, express or implied, regarding the accuracy, completeness or correctness of any information shown on this map. For more information, please contact the County Planning Department.  
To the best extent permissible pursuant to applicable law, Thurston County disclaims all warranties, express or implied, including, but not limited to, negligence, shall Thurston County be liable for any direct, indirect, incidental, special or consequential damages that result from the use of, or the inability to use, Thurston County materials.  
Under no circumstances, including, but not limited to, negligence, shall Thurston County be liable for any direct, indirect, incidental, special or consequential damages that result from the use of, or the inability to use, Thurston County materials.  
20240202 Date and all related data was provided to GeoData by the Thurston County Planning Department. All related data was provided to GeoData and created on the date accordingly. 786-5480. It is not recommended to make final land use decisions based on this map, for it is a graphical representation and not a survey. Please contact the Planning Department for more information.