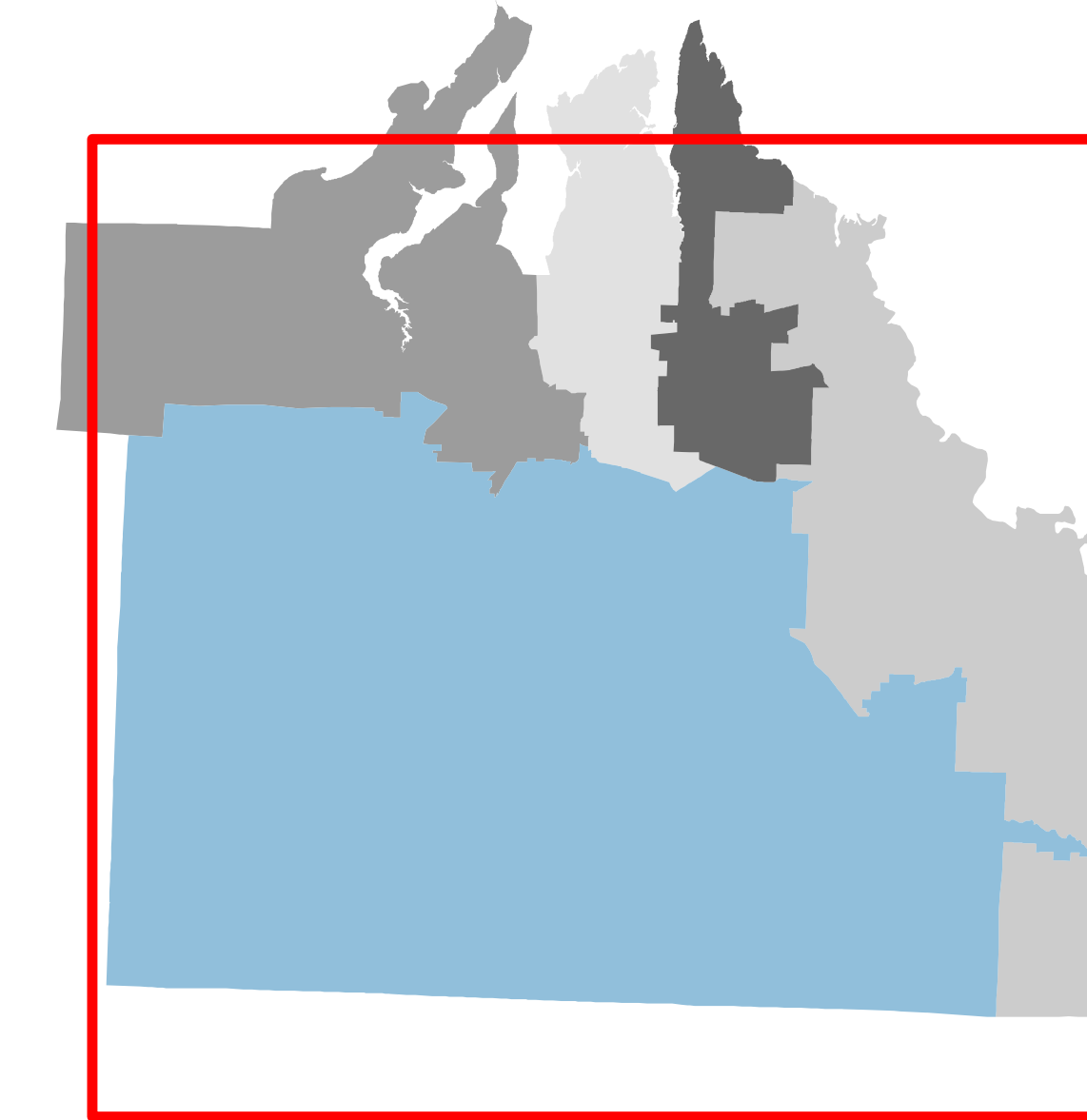
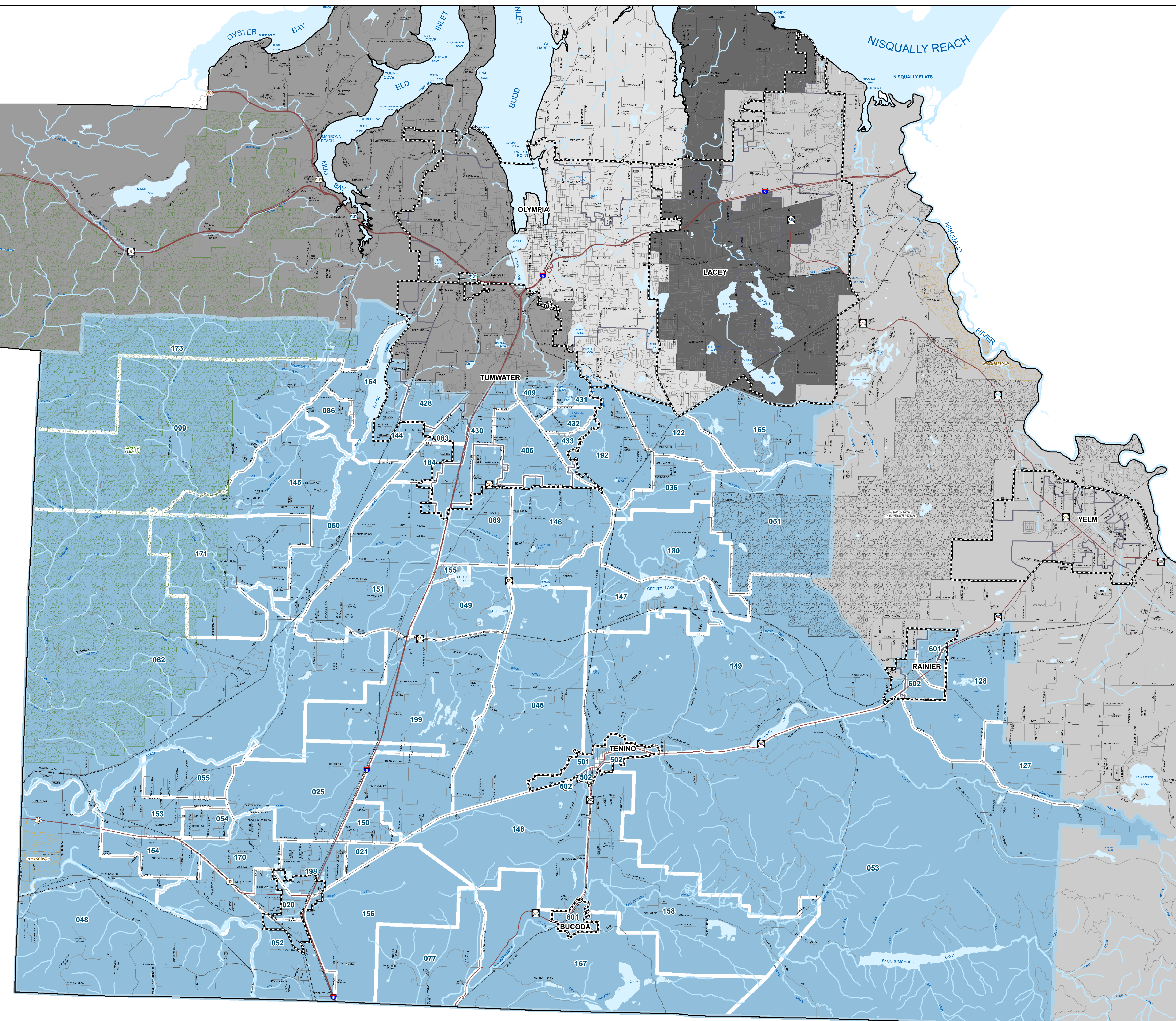


Thurston County Commissioner District 4 Voter Precincts

- Commissioner District 1
- Commissioner District 2
- Commissioner District 3
- Commissioner District 4
- Commissioner District 5

Precinct Number - Name

- | | | |
|----------------------------|----------------------------|---------------------|
| 020 - GRAND MOUND WEST | 127 - RUTH PRAIRIE | 171 - WADDELL CREEK |
| 021 - VIOLET PRAIRIE SOUTH | 128 - WEIR PRAIRIE | 173 - CAMELOT |
| 025 - HENNESS NORTH | 143 - BUSH PRAIRIE | 180 - STEDMAN |
| 036 - RICH | 144 - BLACK LAKE | 184 - SCHELLER |
| 045 - ROCKY PRAIRIE | 145 - DELPHI | 192 - EAST OLYMPIA |
| 048 - MICHIGAN HILL | 146 - SOUTH UNION | 198 - HENNESS SOUTH |
| 049 - SCOTT LAKE SOUTH | 147 - PLUMB | 199 - BEAVER CRK |
| 050 - SALMON CREEK | 148 - SCATTER CREEK | 405 - TUMWATER 5 |
| 051 - SPURGEON CRK | 149 - MCINTOSH | 409 - TUMWATER 9 |
| 052 - JAMES | 150 - VIOLET PRAIRIE NORTH | 428 - TUMWATER 28 |
| 053 - VAIL | 151 - LITTLEROCK | 430 - TUMWATER 30 |
| 054 - ROCHESTER 5 | 153 - ROCHESTER 1 | 431 - TUMWATER 31 |
| 055 - ROCHESTER 4 | 154 - ROCHESTER 2 | 432 - TUMWATER 32 |
| 062 - BLACK RIVER | 155 - SCOTT LAKE NORTH | 433 - TUMWATER 33 |
| 077 - ZENKNER VALLEY | 156 - GRAND MOUND EAST | 501 - TENINO 1 |
| 083 - PRINE | 157 - GIBSON VALLEY | 502 - TENINO 2 |
| 086 - GREENRIDGE | 158 - SKOOKUMCHUCK | 601 - RAINIER 1 |
| 089 - TILLEY | 164 - EVERGREEN SHORES | 602 - RAINIER 2 |
| 099 - ALPINE | 165 - SUNWOOD LAKES | 801 - BUCODA |
| 122 - CHAMBERS | 170 - ROCHESTER 3 | |



Cities
 Urban Growth Areas

0 3.5 Miles

The information included on this map has been compiled by Thurston County staff from a variety of sources and is subject to change without notice. Additional elements may be present in reality that are not represented on the map. Ortho-photos and other data may not align. The boundaries depicted by these datasets are approximate. This document is not intended for use as a survey product.

ALL DATA IS EXPRESSLY PROVIDED 'AS IS' AND 'WITH ALL FAULTS'. Thurston County makes no representations or warranties, express or implied, as to accuracy, completeness, timeliness, or rights to the use of such information. In no event shall Thurston County be liable for direct, indirect, incidental, consequential, special, or tort damages of any kind, including, but not limited to, lost revenues or lost profits, real or anticipated, resulting from the use, misuse or reliance on the information contained on this map. If any portion of this map or disclaimer is missing or altered, Thurston County removes itself from all responsibility from the map and the data contained within. The burden for determining fitness for use lies entirely with the user and the user is solely responsible for understanding the accuracy/limitation of the information contained in this map.

Updated on 12/18/2023

Authorized for 3rd Party reproduction for personal use only.

