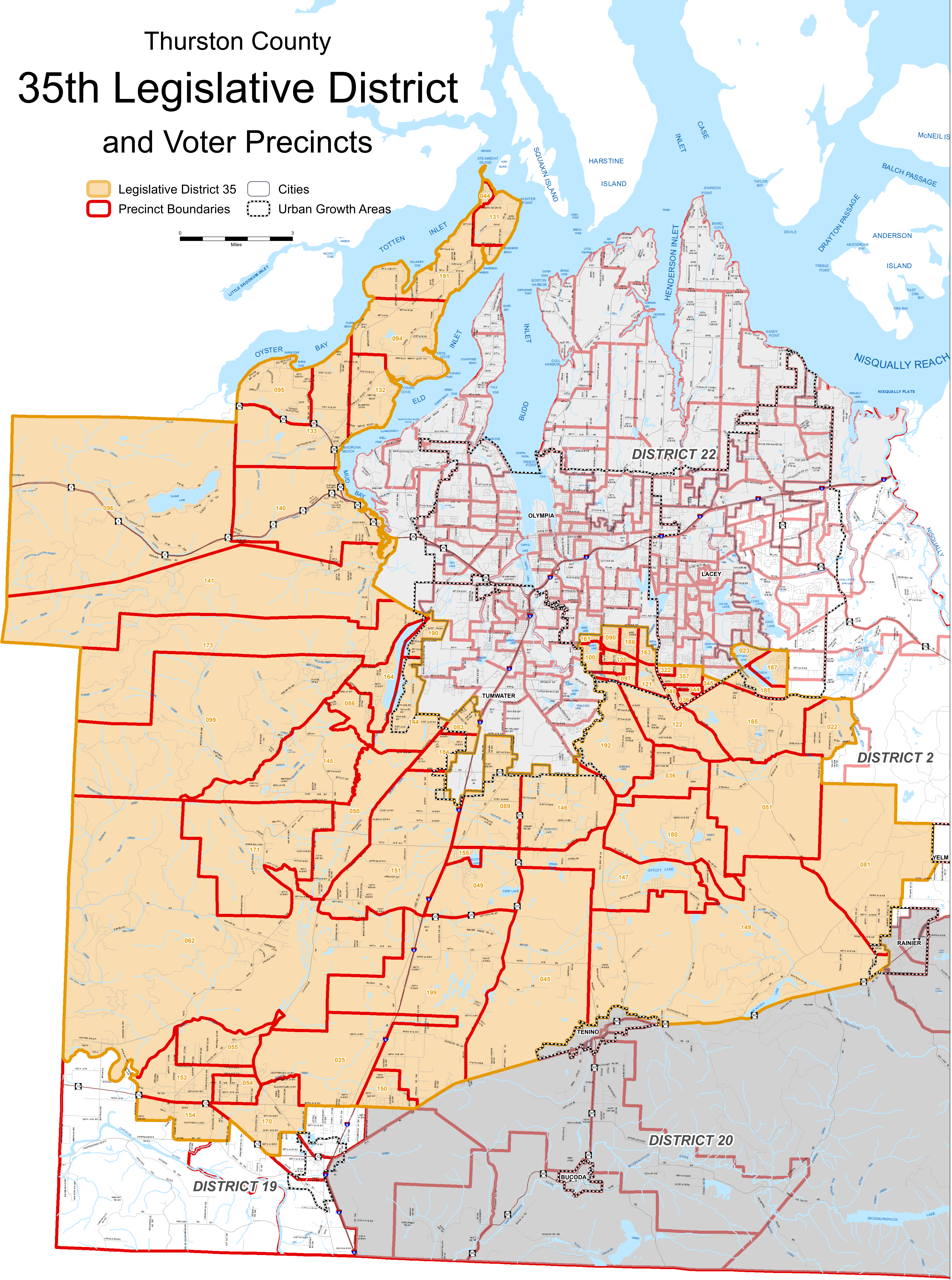


Thurston County 35th Legislative District and Voter Precincts

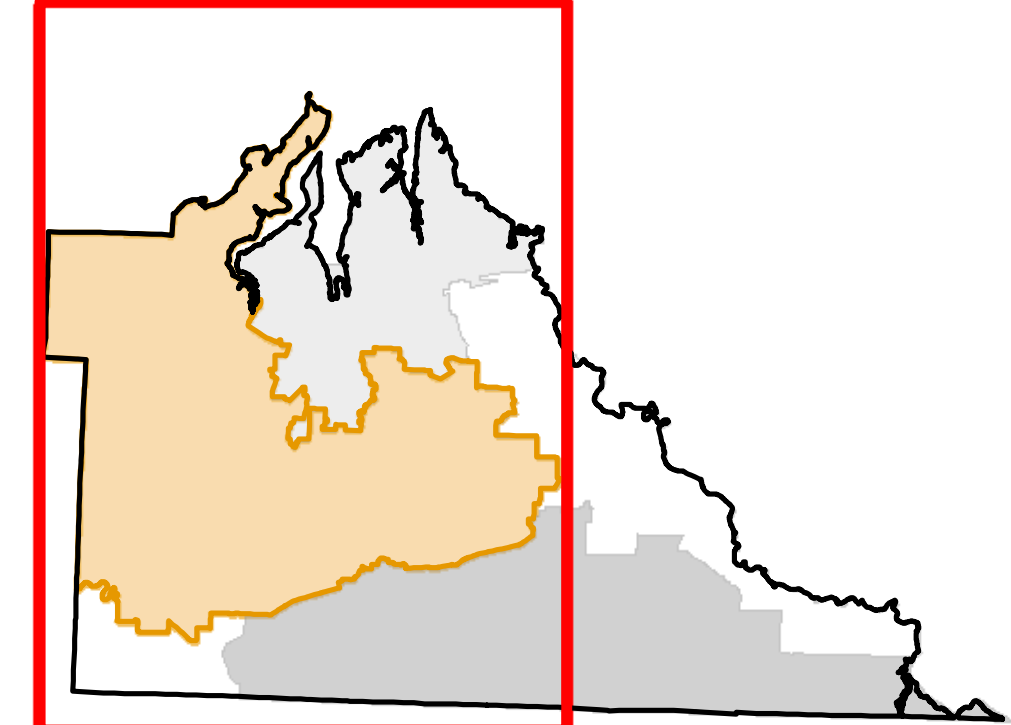
- Legislative District 35
- Cities
- Precinct Boundaries
- Urban Growth Areas



Precinct Number and Name

022, EATON CREEK NORTH	062, BLACK RIVER	100, HEWITT LAKE	146, SOUTH UNION	165, SUNWOOD LAKES	192, EAST OLYMPIA
023, PATTISON EAST	081, MILITARY	120, HAYS	147, PLUMB	170, ROCHESTER 3	322, LACEY 22
025, HENNESS NORTH	083, PRINE	121, INDIAN SUMMER	149, MCINTOSH	171, WADDELL CREEK	336, LACEY 36
036, RICH	086, GREENRIDGE	122, CHAMBERS	150, VIOLET PRAIRIE NORTH	173, CAMELOT	344, LACEY 44
044, STEAMBOAT ISLAND	089, TILLEY	131, HUNTER POINT	151, LITTLEROCK	180, STEDMAN	345, LACEY 45
045, ROCKY PRAIRIE	090, SWEET BRIAR	132, GRIFFIN	153, ROCHESTER 1	184, SCHELLER	349, LACEY 49
049, SCOTT LAKE SOUTH	094, FRYE COVE	133, SCHNEIDERS PRAIRIE	154, ROCHESTER 2	185, FAIR OAKS	357, LACEY 57
050, SALMON CREEK	095, OYSTER BAY	140, MUD BAY	155, SCOTT LAKE NORTH	186, WILDERNESS	
051, SPURGEON CRK	096, SUMMIT LAKE	141, MCLANE	161, WARDS	187, MULLEN	
054, ROCHESTER 5	097, DELRIDGE	144, BLACK LAKE	163, SMITH LAKE	190, LAKESIDE	
055, ROCHESTER 4	099, ALPINE	145, DELPHI	164, EVERGREEN SHORES	191, GALLAGHER COVE	

LOCATION IN THURSTON COUNTY



The information included on this map has been compiled by Thurston County staff from a variety of sources and is subject to change without notice. Additional information may be present in reality that are not represented on the map. Orthographic and other data may not align. The boundaries depicted by these colors are approximate. This document is not intended for use as a survey product.

ALL DATA IS EXPRESSLY PROVIDED "AS IS" AND WITH ALL FAULTS. Thurston County makes no representations or warranties, express or implied, as to accuracy, completeness, timeliness, or rights to the use of such information. In no event shall Thurston County be liable for direct, indirect, incidental, consequential, special, or lost damages of any kind, including, but not limited to, lost revenues or lost profits, real or anticipated, resulting from the use, misuse or reliance of the information contained on this map, if any portion of this map or disclaimer is missing or altered. Thurston County removes itself from all responsibility from the map and the data contained within. The burden for determining fitness for use lies entirely with the user and the user is solely responsible for understanding the accuracy limitation of the information contained in this map.

Updated on 8/29/2022

Authorized for 3rd Party reproduction for personal use only.

